

PK-GLG28IN Packing Instructions

Shipper must ensure compatibility with all packaging materials and follow all appropriate transport regulations. For air shipment of liquids, containers must meet pressure, secondary closure and leak-proof liner requirements (**See IATA DGR Section 5 / ICAO TI Section 4**). Deviations from any part of this instruction may void the UN certification. Please consult 49 CFR for United States record retention requirement. If further information is required, contact ICC The Compliance Center Inc at 1-888-442-9628

Packaging Components

Item	Description	Qty
BX-105SP	Outer box 10" x 10" x 19"	1
IN-105SP	Insert 6" x 6" x 19"	1
BI-BSS10	Liner Bag 43" x 48"	1
GL-G2800A	128oz amber glass bottle with cap	1



Packaging components required to complete this assembly supplied separately

AB-VERM4	Vermiculite or equivalent absorbent and/or cushioning material. Use sufficient quantity of absorbent to absorb the entire liquid contents. All void space must be filled.
PA-MSST1	3M # 305 48mm clear tape or equivalent

Important Information

Each assembled package must not exceed a gross weight of	12.9kg/28.3lb
The total of all inner packaging must not exceed a gross weight of	9.4kg/20lb
Minimum cushioning distance for top/bottom	2 7/8"
Minimum cushioning distance sides	2 7/8"
Cap closure past contact with gasket	1/8 th turn or 30in.lbs

Assembly:

1. Fold in bottom flaps. Seal center seam with two strips of 48mm wide, 3M #305 clear packing tape **or** equivalent. Extend tape beyond edge and onto the side of the box by at least 2".
2. Line inside bottom and walls of box with liner bag (Figure 1).
3. Fold out the bottom flaps of the insert and push in the bottom tabs of the insert as shown in figure 2. Then place the insert in the box as shown in figure 3.
4. Do not completely fill each inner container with liquid. Allow sufficient ullage for liquid expansion. Tighten cap to specifications.
5. Fill the insert to the top of the lower push in tabs with absorbent/cushioning material (Figure 4).
6. Place inner container into the insert on top of the layer of absorbent/cushioning and push in the top push tabs. Then fill all void space in the package with absorbent/cushioning material (Figure 5). Tap the sides of the box to help to settle vermiculite evenly around the bottle.
7. Fold and seal top portion of liner bag (Figure 6).
8. Fold top box flaps and seal center seam as described above in step 1 (Figure 7).

Figure 1

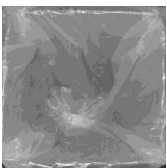


Figure 2



Figure 3

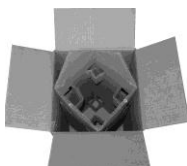


Figure 4



Figure 5

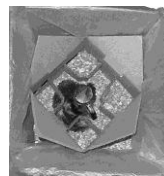


Figure 6



Figure 7

